

LORD RESIDENCE

Rain Garden



Pre-Rain Garden Conditions

Rain falling on the roof of the Lord residence was discharged into the street, eventually making its way to the Mississippi River via the storm sewer system. This excess runoff from impervious surfaces can cause:

- An increased risk of flooding and bank erosion
- An influx of sediments, nutrients and pollutants
- An increase in water temperatures.

PROJECT SPECS

Date Planted Summer 2004

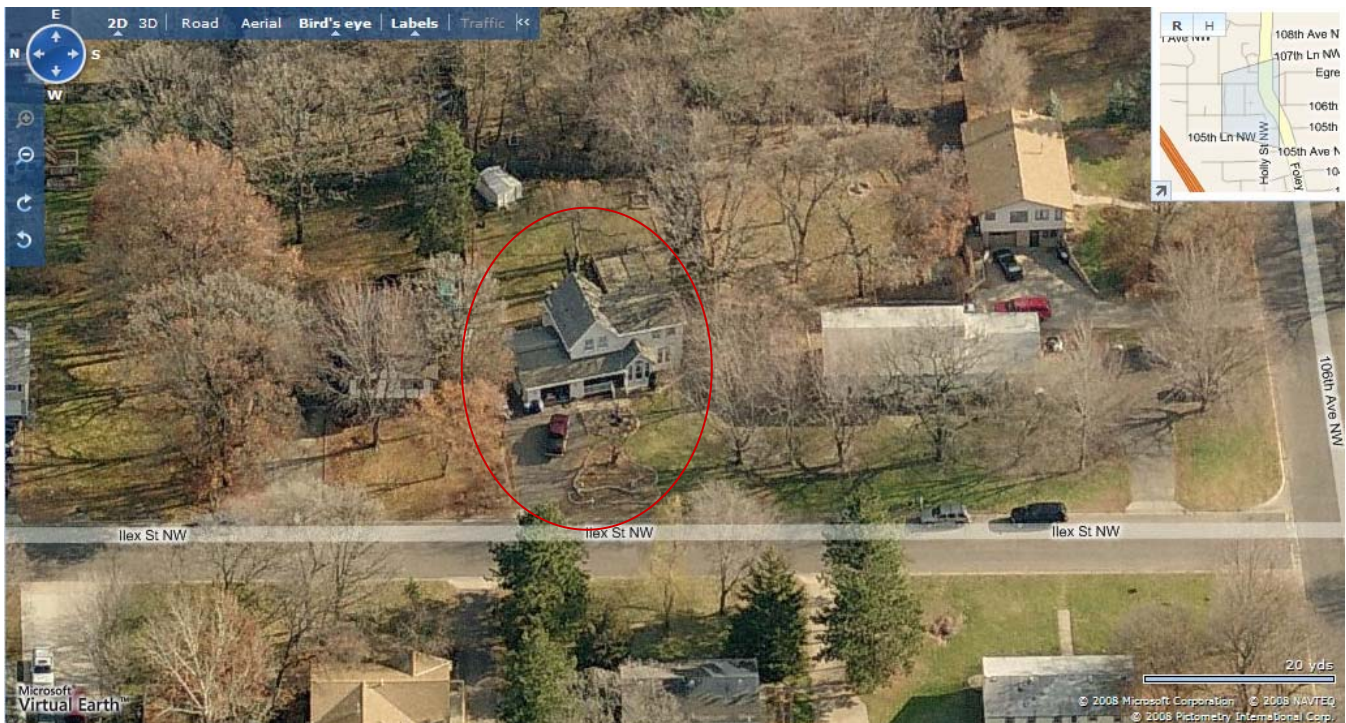
Rain Gardens Installed 1

Water Treatment Capacity 116 ft³

Water Detention Capacity 81 ft³

Estimated Homeowner Labor \$2,615.27

Cost-share Funds Provided \$562.89



Before Rain Garden Installation



May 2003



Rain falling on the roof is discharged into the street where it enters the storm sewer system.

After Rain Garden Installation



June 2005



The rain gardens can treat up to 116 ft³, reducing pollution and nutrient input to the Mississippi River.