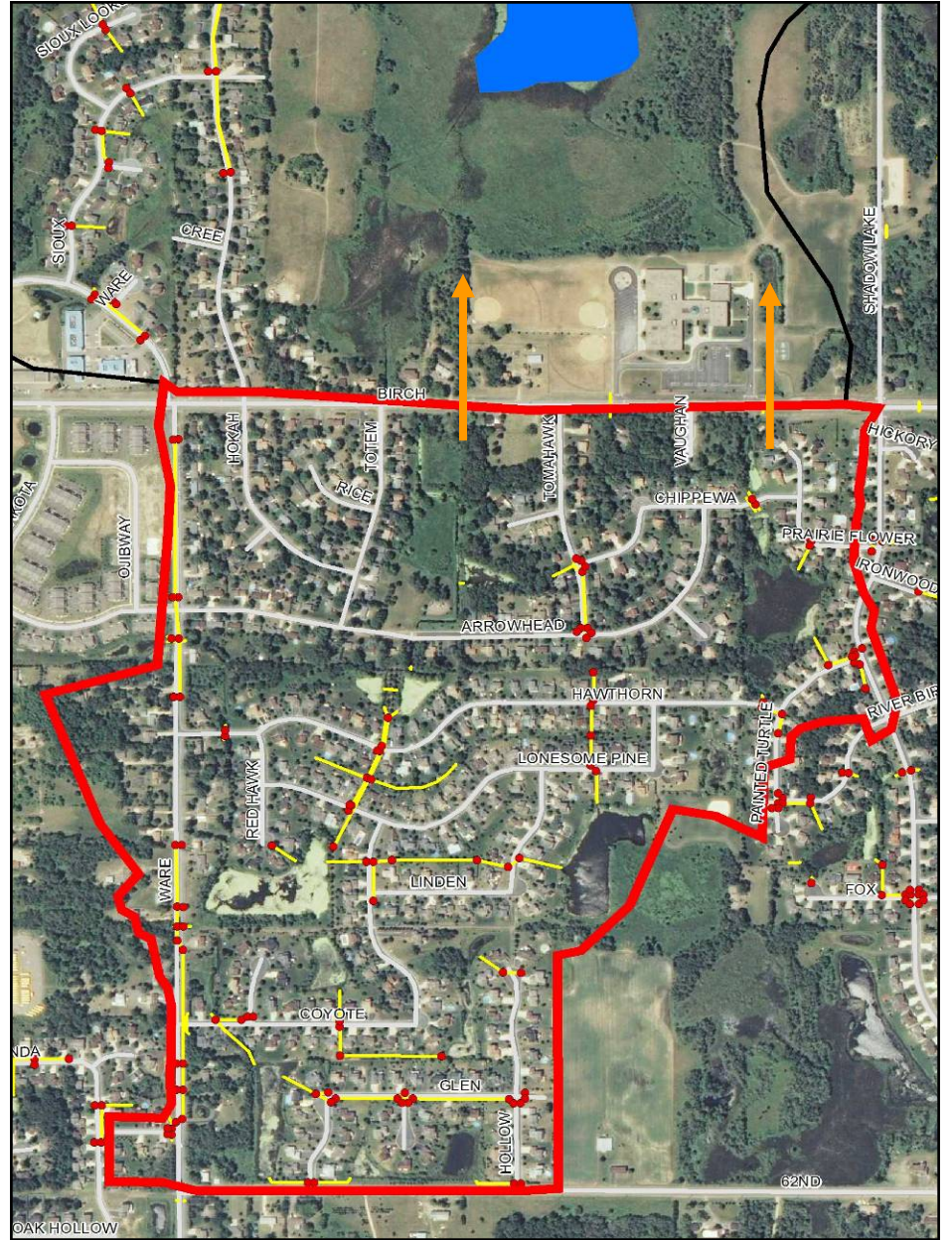
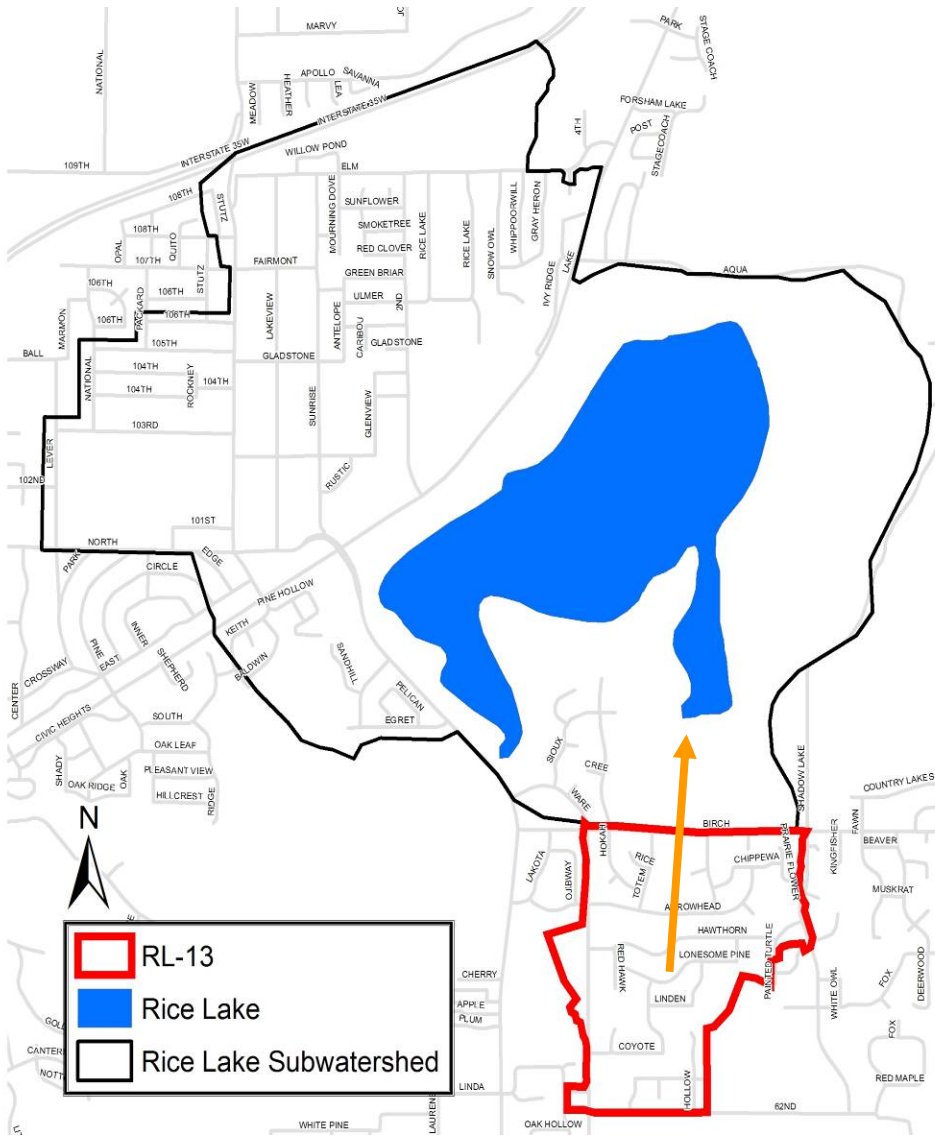


Rice Lake Rain Garden Program



What do Rain Gardens Do?

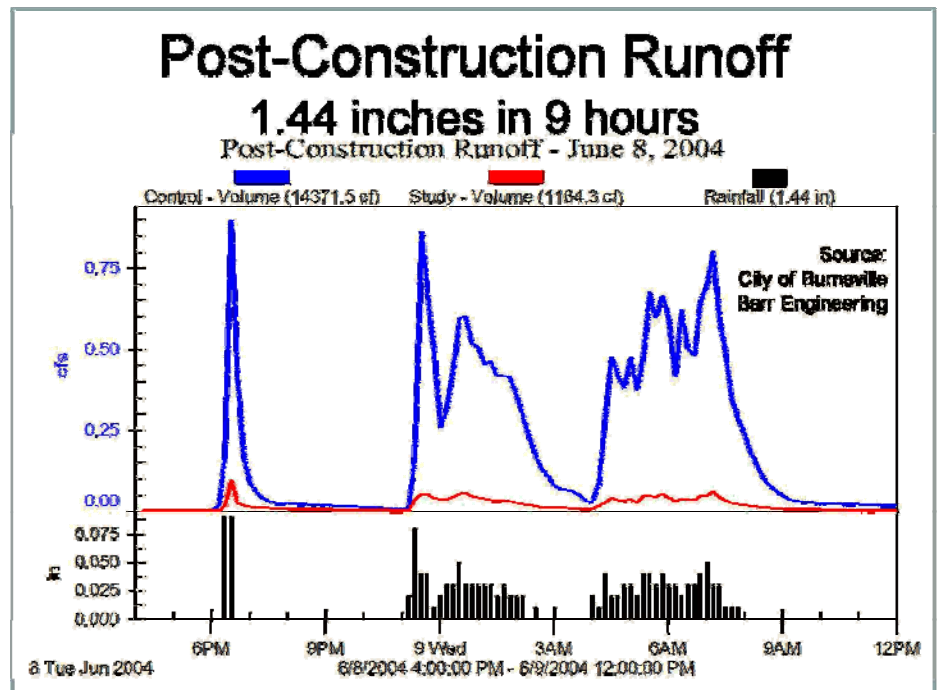
- Capture stormwater runoff
- Water treated in garden by plants and soils

Why This Neighborhood?

- Rice Lake has poor water quality
- Lake assessment identified neighborhood as an issue.

Why Your Property?

- Your property is a high priority, located near a storm drain and has the potential to capture large amounts of stormwater.



Curb-Cut Rain Garden Construction Steps

